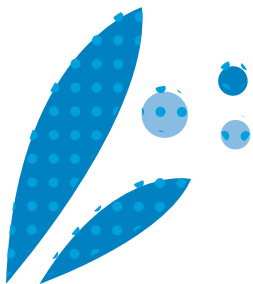


EMILIA

COVER CROPS

Against beet nematodes





EMILIA

Category: White mustard
Seed type: Very late

TWG: 7
Sowing rate: 10–15 kg/ha

ITS ADVANTAGES

- **Vigorous and rapid planting:**
 - EMILIA is a white mustard variety characterised by vigorous and rapid planting, which allows for rapid soil cover and improved competition against weeds. This variety is therefore highly valued for cover crops.
- **Reduction of *H. schachtii* nematodes:**
 - EMILIA shows excellent potential for reducing populations of the *H. schachtii* nematode, which is a pest nematode affecting beet crops. Indeed, this variety is often used as a suppressor plant to limit populations of this nematode in the soil.
- **Good ground cover:**
 - Thanks to its vigorous growth, EMILIA provides excellent ground cover, which helps to limit erosion and improve soil structure.
This plant cover also helps to preserve biodiversity and promote microbial activity in the soil.
- **Easier destruction and improved mineralisation:**
 - EMILIA is characterised by low lignification, which makes it easier to break down in the spring. This variety is therefore highly valued for cover crop management.
Furthermore, the low lignification allows for better mineralisation of crop residues in the spring, which improves the availability of nutrients for subsequent crops.



myCHLORofiltre®

The myChlorofiltre app is a decision support system (DSS) designed for the cultivation of cover crops. Developed by Cérieence, myChlorofiltre is the only app that allows you to perform biomass evaluation of cover crops from photos; an innovative, easy-to-use tool that is free of charge!

It includes three complementary services:

- Choose my cover crop
- Ensure successful planting
- Biomass evaluation

www.mychlorofiltre.fr

IN WHICH SITUATIONS?

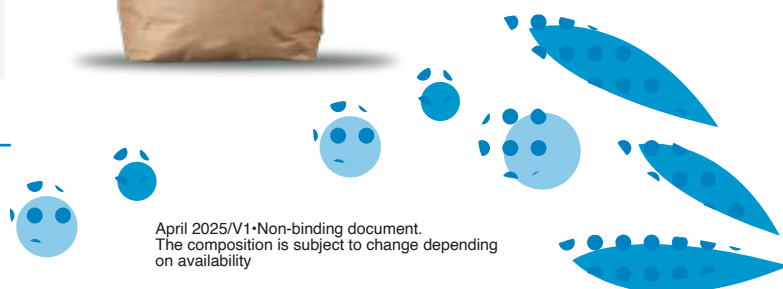
Cover crop	OSR companion plant

Planting tips:

- Manage crop residues
- Shallow tillage to a maximum depth of 3–5 cm
- Sow at a depth of 1–2 cm
- Roll to ensure seed-to-soil contact



Packing:
25kg bag



April 2025/V1 • Non-binding document.
The composition is subject to change depending on availability



Route de la Ménitrié - Beaufort-en-Vallée –
49250 BEAUFORT EN ANJOU - FRANCE
Tél : + 33 (0)5 49 54 20 54
www.cerience.fr