



# Cérierence

L'AGRONOME SEMENCIER



## M-NUTRIMAX

FORAGE MIXTURE

**AN ALTERNATIVE TO STRAIGHT ALFALFA  
FOR PRODUCING PROTEIN-RICH FORAGE!**



# M-NUTRIMAX

## Profile:

- Long-term forage mixture

## Persistence:

- 4 years or more

## Soil types:

- Well drained and deep

## Dosing rate (kg/ha):

- 30 kg

## Forage mix (by weight):

- 30% Tall fescue ILLIADE
- 20% Red clover LESTRIS
- 20% Alfalfa OCCITANE
- 10% Alfalfa GALAXIE
- 10% Alfalfa LUZELLE
- 5% Timothy grass AURORA
- 5% TENACE tetraploid Perennial ryegrass for fodder



## ITS ADVANTAGES

- **A highly productive forage mix suitable for a wide range of climatic conditions:**
  - The grasses in the mixture ensure a high biomass yield, particularly where field conditions are variable, and help to minimise weed infestation.
  - The complementary dormancy of the three alfalfa varieties (fall dormancy indices of 6, 4 and 2 respectively) allows for a high proportion of Legumes in many climatic conditions.
  - Red clover aims to maintain a high legume content, even in the event of patchy growth and conditions less favourable to alfalfa growth.
- **Fodder of excellent nutritional quality:**
  - Grasses, particularly Timothy and TENACE perennial ryegrass, contribute to the high energy content of the fodder.
  - The alfalfa varieties in the mixture are from our own selection, which incorporates protein content and digestibility into the selection criteria.
- **Great flexibility in harvesting and ease of drying:**
  - The balance between grasses and legumes facilitates fodder silage if conditions do not allow for drying and hay storage.



Because simply combining the best varieties does not necessarily result in the best mixtures, this forage mix includes varieties that have been bred and evaluated for their suitability in mixture through specialised breeding programmes.

The aim of this forage mix is to ensure reliable production by adapting to soil heterogeneity and climatic uncertainties.

## IN WHICH SITUATIONS?

| Grazing | Mowing |
|---------|--------|
|         |        |

### Sowing (from March to April or from August to early September):

- Prepare a fine surface layer of soil;
- Sow at a depth of 1 to 2 cm;
- Roll the soil immediately after sowing.

### Protecting seedlings:

- Keep an eye out for slugs and snails at the time of planting and take action if necessary.

### Fertilization:

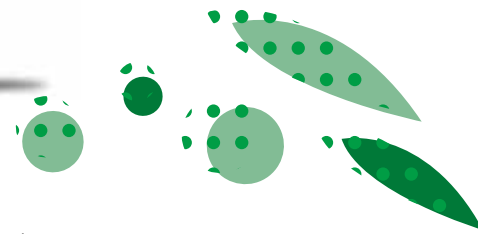
- Before applying any fertiliser, take into account the nutrients available in the soil by referring to the soil analysis and local regulations.
- If your soil's pH is below 6.2, apply corrective liming to promote alfalfa planting and grass growth

S.A.S GOLD: pre-inoculated seeds, contain the Sinorhizobium meliloti strain –  $2.5 \times 10^8$  CFU/g NITRAGIN GOLD – Marketing Authorisation No. 1150014 - Non-classified product - Property of NOVOZYMES A/S Krogshoejvej 362880 BAGSVAERD DENMARK.RHIZOSEED - Marketing Authorisation No. 1190518 - Non-classified product - Owned by CYBELE AGROCARE SAS 7 rue Aristide Briand 92300 LEVALLOIS-PERRET FRANCE. Our S.A.S GOLD coated seeds contain 84% bare seeds and 16% seed pelleting.

S.A.S START: seeds with a biostimulant to improve crop emergence, yield and regrowth. NURSEED HC - Marketing Authorisation No. 1211087 - Non-classified product - Property of FYTEKO, 4 allée de la recherche, 1070 BRUSSELS. Our S.A.S START solution is coated onto the seed without modification of TWG.

S.A.S STIM: film-coated seeds with biostimulant to stimulate planting and enhance stress resistance O-SYR - AMM No. 108002 - Non-classified product - Property of FRAYSSINET La Mothe 81240 ROUAIROUX. Our S.A.S STIM coated seeds contain 70% bare seeds and 30% coating.

**Packing:**  
15 kg bag



March 2026/V1 - Non-binding document.  
The information contained in this document is provided for guidance only and may vary depending on pedoclimatic conditions and growing conditions.  
The varieties included in the mixture may vary depending on availability.  
Do not allow hairy vetch to be consumed as seed.



Route de la Ménitré - Beaufort-en-Vallée –  
49250 BEAUFORT EN ANJOU - FRANCE  
Tél : + 33 (0)5 49 54 20 54  
www.cerience.fr