

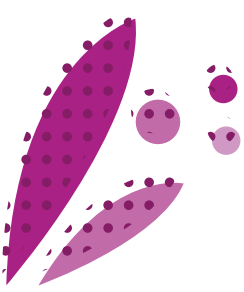
**C**érience  
L'AGRONOME SEMENCIER

**LUZELLE**

**ALFALFA**

**THE BREEDERS' ALFALFA!**





# LUZELLE

**Type:** Very winter dormant (dormancy fall index: 2.1)  
**Persistency:** 4 years and more

**Sowing rate:**  
 - 20 to 25 kg/ha (8 to 10 kg/ac) straight  
 - 2 Précidose®/ha

## ITS ADVANTAGES

- **LUZELLE is the first alfalfa adapted for grazing:**
  - LUZELLE is characterized by a widespread growth allowing it to be grazed without its longevity to be reduced unlike other traditional varieties.
- **Excellent feed value:**
  - The high protein content and the digestibility of LUZELLE allow the production of a fodder very well consumed and valued by the livestock.
  - Furthermore, LUZELLE is a variety with thin stems: therefore, the fodder is very leafy and is even consumed by the most demanding animals.
- **Perfect variety for middle mountain breeding areas:**
  - LUZELLE winter hardiness allows alfalfa cropping in milled mountain or late spring areas.



**ADVISES YOU**

## LUZELLE

is also available with different coating technologies:

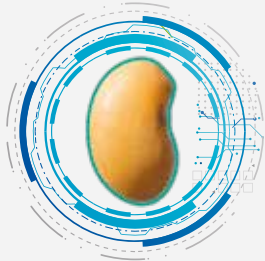
**S.A.S LIFE** **S.A.S PREMIUM** : mycorrhizae + rhizobium + nutrients cocktail : a technology which optimizes the water and nutrients absorption and improves stress resistance.

**S.A.S GOLD** **S.A.S PREMIUM** : rhizobium + nutrients cocktail : a ready-to-use product that maximizes the potential of alfalfa.

**S.A.S ENERGY** nutrients cocktail : a coating which secures crop establishment and yields while preventing from trace-elements deficiencies.

**S.A.S READY** rhizobium: pre-inoculated seeds for a secured crop development.

Our S.A.S range for alfalfa contains 84% seeds and 16% coating solution, except the S.A.S READY grade with 70% seeds and 30% coating solution. Some S.A.S grades are available in Précidose®, an efficient packing which ensures an accurate number of seeds per bag. Using 2 Précidose®/ha ensures an optimal sowing density of 900 seeds/m<sup>2</sup>.



**MICRO-NUTRITION**  
TRACE ELEMENTS

S.A.S READY, S.A.S GOLD, S.A.S PREMIUM: pre-inoculated seeds, coated with the strain *Sinorhizobium meliloti* - 2.5/3.10 E8 CFU/g NITRAGIN GOLD - MA n°1150014 - No classification - Proprietary NOVOZYMES A/S Krogshøjvej 36 2880 BAGSVAERD DENMARK. RHIZOSEED - MA n° 1190518 - No classification - Proprietary CYBELE AGROCARE SAS 7 rue Aristide Briand 92 300 LEVALLOIS-PERRET FRANCE.

S.A.S LIFE, S.A.S PREMIUM+: pre-inoculated seeds, coated with the strains *Sinorhizobium meliloti* - 2.5/3.10 E8 CFU/g and *Glomus intraradices* 500 propagules/g NITRAGIN GOLD - MA n°1150014 - No classification - Proprietary NOVOZYMES A/S Krogshøjvej 36 2880 BAGSVAERD DENMARK. RHIZOSEED - MA n° 1190518 - No classification - Proprietary CYBELE AGROCARE SAS 7 rue Aristide Briand 92 300 LEVALLOIS-PERRET FRANCE. OZOR® - MA n°1301002 - No classification - Proprietary IF TECH Centre Florilivre 3 rue des Magnolias 49130 LES PONTS DE CE FRANCE. OZOR® is a registered trademark of IF TECH.

## SO THAT THEY SITUATIONS?

Grazing	Mowing	Dehydration

### Sowing :

- Choose suitable fields for cultivating alfalfa : well drained soils and pH above 6.5, consider liming if necessary;
- Ideally sow in spring for a better establishment;
- In summer, drill as soon as the previous crop has been harvested.
- Prepare a thin seed bed to ensure optimal soil-seed contact;
- Sow at a depth of 0.5 to 1 cm maximum. If bare or S.A.S ENERGY coated seeds are used, it is advised to inoculate the seeds with a *Rhizobium meliloti* strain prior to sowing, particularly if no alfalfa has been cultivated for the past years, but also in case the organic matter content of the soil is low.
- Roll right after sowing.

### Protection :

- Monitor slugs during the establishment and take action if necessary.
- Control weeds at 3-4 trifoliolate leaves stage if needed.

### Fertilisation :

- Perform soil analysis regularly in order to know the pH and the nutrients contents with accuracy. Adjust fertilization accordingly;
- Make sure you compensate the nutrients that are exported and increase your inputs in case of poor soils.
- Alfalfa is very demanding in potassium (K<sub>2</sub>O) and, to a lower extend, in phosphorus (P<sub>2</sub>O<sub>5</sub>).



Packaging:  
 15 kg or 25 kg bag  
 or Précidose® (4.5 millions of seeds)



-NOV 2022 V1-  
 •Non-contractual document.  
 This document is provided for information purposes only.  
 Recommendations may vary according to local soil and climate conditions and local agricultural practices.



Route de la Ménittré - Beaufort-en-Vallée -  
 49250 BEAUFORT EN ANJOU - FRANCE  
 Tél : + 33 (0)241 796 320  
 www.cerience.fr