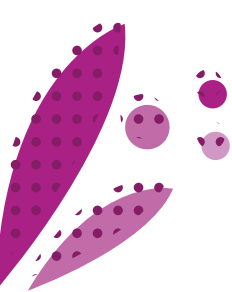


## LIMORY

### ALFALFA

**INNOVATION IN ALFALFA BREEDING !**  
**LIMORY RESULTS FROM THE CROSSING OF OUR TOP-NOTCH WINTER DORMANT**  
**VARIETIES OF *MEDICAGO SATIVA***  
**WITH AN IMPROVED *MEDICAGO FALCATA* POOL.**





# LIMORY

**Type:** Winter dormant (dormancy fall index: 3)

**Persistency:** 4 years and more

**Sowing rate:**

- 20 to 25 kg/ha (8 to 10 kg/ac) straight
- 2 Précidose®/ha

**Pest and disease resistance:**

- Anthracnose : 6,9
- Verticilium : 4,4
- Stem nematodes : 6,1

Trials performed in France, the scores range from 1 (very sensitive) to 9 (very resistant).

## ITS ADVANTAGES

- **Very high performing variety under continental and semi-continental climate:**
  - Winter dormancy (dormancy fall index 3) has been improved thanks to the crossing with a *Medicago falcata* pool (*Medicago falcata* is native to Eastern Europe and Central Asia).
  - High yielding potential is brought by the association of our top-yielding winter dormant type genetic pool and the specific breeding we did on our *Medicago falcata* genetic pool.
- **Excellent feed value:**
  - LIMORY leaf retention is excellent ensuring the production of a leafy fodder.
  - Protein content is also very good because the leaf to stem ratio is high.
  - Then, the fodder is even consumed by the most demanding animals thanks to LIMORY thin stems.



**ADVISES YOU**

**LIMORY**

is also available with different coating technologies:

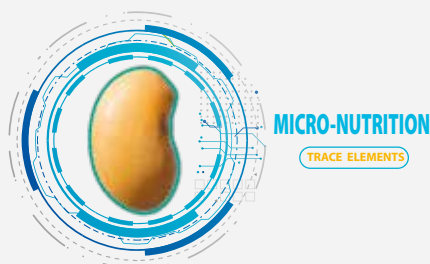
**S.A.S LIFE** **S.A.S PREMIUM** mycorrhizae + rhizobium + nutrients cocktail : a technology which optimizes the water and nutrients absorption and improves stress resistance.

**S.A.S GOLD** **S.A.S PREMIUM** rhizobium + nutrients cocktail : a ready-to-use product that maximizes the potential of alfalfa.

**S.A.S ENERGY** nutrients cocktail : a coating which secures crop establishment and yields while preventing from trace-elements deficiencies.

**S.A.S READY** rhizobium: pre-inoculated seeds for a secured crop development.

Our S.A.S range for alfalfa contains 84% seeds and 16% coating solution, except the S.A.S READY grade with 70% seeds and 30% coating solution. Some S.A.S grades are available in Précidose®, an efficient packing which ensures an accurate number of seeds per bag. Using 2 Précidose®/ha ensures an optimal sowing density of 900 seeds/m².



S.A.S READY, S.A.S GOLD, S.A.S PREMIUM: pre-inoculated seeds, coated with the strain *Sinorhizobium meliloti* - 2.5/3.10 E8 CFU/g NITRAGIN GOLD - MA n° 1150014 - No classification - Proprietary NOVOZYMES A/S Krogshøjvej 36 2880 BAGSVAERD DENMARK. RHIZOSEED - MA n° 1190518 - No classification - Proprietary CYBELE AGROCAIRE SAS 7 rue Aristide Briand 92 300 LEVALLOIS-PERRET FRANCE.

S.A.S LIFE, S.A.S PREMIUM+: pre-inoculated seeds, coated with the strains *Sinorhizobium meliloti* - 2.5/3.10 E8 CFU/g and *Glomus intraradices* 500 propagules/g NITRAGIN GOLD - MA n° 1150014 - No classification - Proprietary NOVOZYMES A/S Krogshøjvej 36 2880 BAGSVAERD DENMARK. RHIZOSEED - MA n° 1190518 - No classification - Proprietary CYBELE AGROCAIRE SAS 7 rue Aristide Briand 92 300 LEVALLOIS-PERRET FRANCE. OZOR® - MA n° 1301002 - No classification - Proprietary IF TECH Centre Florilore 3 rue des Magnolias 49130 LES PONTS DE CE FRANCE. OZOR® is a registered trademark of IF TECH.

## FOR WHAT USE?

Grazing	Mowing	Dehydration

### Sowing:

- Choose suitable fields for cultivating alfalfa : well drained soils and pH above 6.5, consider liming if necessary;
- Ideally sow in spring for a better establishment;
- In summer, drill as soon as the previous crop has been harvested.
- Prepare a thin seed bed to ensure optimal soil-seed contact;
- Sow at a depth of 0.5 to 1 cm maximum. If bare or S.A.S ENERGY coated seeds are used, it is advised to inoculate the seeds with a *Rhizobium meliloti* strain prior to sowing, particularly if no alfalfa has been cultivated for the past years, but also in case the organic matter content of the soil is low.
- Roll right after sowing.

### Protection:

- Monitor slugs during the establishment and take action if necessary.
- Control weeds at 3-4 trifoliate leaves stage if needed.

### Fertilisation:

- Perform soil analysis regularly in order to know the pH and the nutrients contents with accuracy. Adjust fertilization accordingly;
- Make sure you compensate the nutrients that are exported and increase your inputs in case of poor soils.
- Alfalfa is very demanding in potassium ( $K_2O$ ) and, to a lower extent, in phosphorus ( $P_2O_5$ ).



Packaging:  
15 kg or 25 kg bag  
or Précidose® (4.5 millions of seeds)



Route de la Ménitrie - Beaufort-en-Vallée –  
49250 BEAUFORT EN ANJOU - FRANCE  
Tél : + 33 (0)241 796 320  
www.cerence.fr

2022-This document is provided for information purpose only. Recommendations may vary according to local soil and climate conditions and local agricultural practices. The varieties included in the mix may be replaced by similar varieties depending on availability.

