

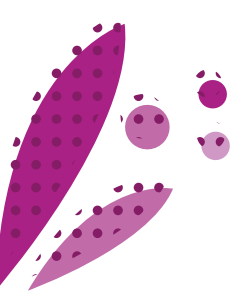
**C**érience  
L'AGRONOME SEMENCIER

# ALFAMAX 6

ALFALFA

**THE WINNING COMBINATION FOR  
A STEADY ALFALFA PRODUCTION IN REGIONS WITH HOT SUMMERS !**





# ALFAMAX 6

## Type: Mixture

- 25% MILKY MAX (dormancy fall index: 4.5)
- 20% OCCITANE (dormancy fall index: 6.5)
- 20% TEQUILLA (dormancy fall index: 7.5)
- 35% AVIA (dormancy fall index: 8)

**Persistence:** 4 years and more

## Sowing rate:

- 20 to 25 kg/ha (8 to 10 kg/ac) straight
- 2 Précidose®/ha

## ITS ADVANTAGES

### • Consistent forage yields thanks to the complementary dormancies of the 4 varieties:

- AVIA is a winter active variety which grows continuously and is well adapted to frequent cutting thanks to its vigorous regrowth ability.
- TEQUILLA is a winter active variety which performs well both in dry and irrigated conditions.
- OCCITANE is a winter active variety with a good cold resistance.
- At last MILKY MAX is a winter dormant variety. It secures spring production in case of more severe winter conditions than usual.

### • Improved persistency thanks to the complementary disease and pest resistances:

- TEQUILLA and AVIA are both fusarium resistant ; TEQUILLA is also resistant to verticillium and root rots while AVIA is resistant to phytophthora and most aphids.
- OCCITANE is one of the few winter active varieties which shows a good resistance to nematodes (score: 6) while MILKY MAX is resistant (7.6). In the french evaluation system, the scores range from 1 (very sensitive) to 9 (very resistant).

### • Forage quality :

- Our breeding programs aim at improving both the protein content (through the leaf to stem ratio) and the dry matter digestibility.



**ADVISES YOU**

**LIMORY**

is also available with different coating technologies:

**S.A.S LIFE** **S.A.S PREMIUM+** : mycorrhizae + rhizobium + nutrients cocktail : a technology which optimizes the water and nutrients absorption and improves stress resistance.

**S.A.S GOLD** **S.A.S PREMIUM** : rhizobium + nutrients cocktail : a ready-to-use product that maximizes the potential of alfalfa.

**S.A.S ENERGY** nutrients cocktail : a coating which secures crop establishment and yields while preventing from trace-elements deficiencies.

**S.A.S READY** rhizobium: pre-inoculated seeds for a secured crop development.

Our S.A.S range for alfalfa contains 84% seeds and 16% coating solution, except the S.A.S READY grade with 70% seeds and 30% coating solution. Some S.A.S grades are available in Précidose®, an efficient packing which ensures an accurate number of seeds per bag. Using 2 Précidose®/ha ensures an optimal sowing density of 900 seeds/m<sup>2</sup>.

**SYNERGY**  
PRE-INOCULATION  
RHIZOBIUM  
MICRO-ORGANISMS  
MYCORRHIZAE



S.A.S READY, S.A.S GOLD, S.A.S PREMIUM: pre-inoculated seeds, coated with the strain *Sinorhizobium meliloti* - 2.5/3.10 E8 CFU/g  
NITRAGIN GOLD - MA n°1150014 - No classification - Proprietary NOVIOZYMES A/S Krogshøjvej 36 2880 BAGSVAERD DENMARK.  
RHIZOSEED - MA n°1190518 - No classification - Proprietary CYBELE AGROCARE SAS 7 rue Aristide Briand 92 300 LEVALLOIS-PERRET FRANCE.

S.A.S LIFE, S.A.S PREMIUM+: pre-inoculated seeds, coated with the strains *Sinorhizobium meliloti* - 2.5/3.10 E8 CFU/g and *Glomus intraradices* 500 propagules/g  
NITRAGIN GOLD - MA n°1150014 - No classification - Proprietary NOVIOZYMES A/S Krogshøjvej 36 2880 BAGSVAERD DENMARK.  
RHIZOSEED - MA n°1190518 - No classification - Proprietary CYBELE AGROCARE SAS 7 rue Aristide Briand 92 300 LEVALLOIS-PERRET FRANCE.  
OZOR® - MA n°1301002 - No classification - Proprietary IF TECH Centre Florilore 3 rue des Magnolias 49130 LES PONTS DE CE FRANCE. OZOR® is a registered trademark of IF TECH.

## FOR WHAT USE?

Grazing	Mowing	Dehydration

### Sowing:

- Choose suitable fields for cultivating alfalfa : well drained soils and pH above 6.5, consider liming if necessary;
- Ideally sow in spring for a better establishment;
- In summer, drill as soon as the previous crop has been harvested.
- Prepare a thin seed bed to ensure optimal soil-seed contact;
- Sow at a depth of 0.5 to 1 cm maximum. If bare or S.A.S ENERGY coated seeds are used, it is advised to inoculate the seeds with a *Rhizobium meliloti* strain prior to sowing, particularly if no alfalfa has been cultivated for the past years, but also in case the organic matter content of the soil is low.
- Roll right after sowing.

### Protection:

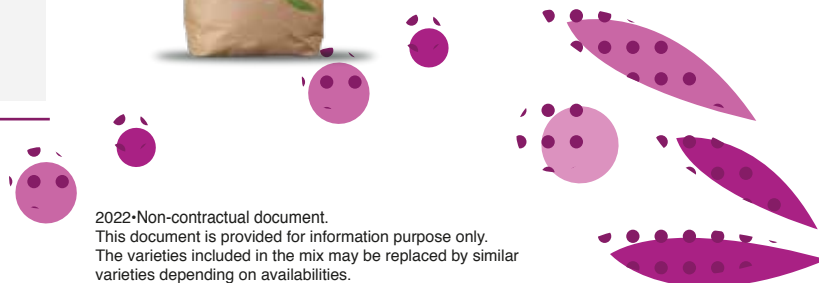
- Monitor slugs during the establishment and take action if necessary.
- Control weeds at 3-4 trifoliate leaves stage if needed.

### Fertilisation:

- Perform soil analysis regularly in order to know the pH and the nutrients contents with accuracy. Adjust fertilization accordingly;
- Make sure you compensate the nutrients that are exported and increase your inputs in case of poor soils.
- Alfalfa is very demanding in potassium (K<sub>2</sub>O) and, to a lower extent, in phosphorus (P<sub>2</sub>O<sub>5</sub>).



Packaging:  
15 kg or 25 kg bag  
or Précidose® (4.5 millions of seeds)



2022-Non-contractual document.

This document is provided for information purpose only. The varieties included in the mix may be replaced by similar varieties depending on availabilities.

**Cerience**  
L'AGRONOME SEMENCIER

Route de la Ménitré - Beaufort-en-Vallée -  
49250 BEAUFORT EN ANJOU - FRANCE  
Tél : + 33 (0)241 796 320  
www.cerience.fr