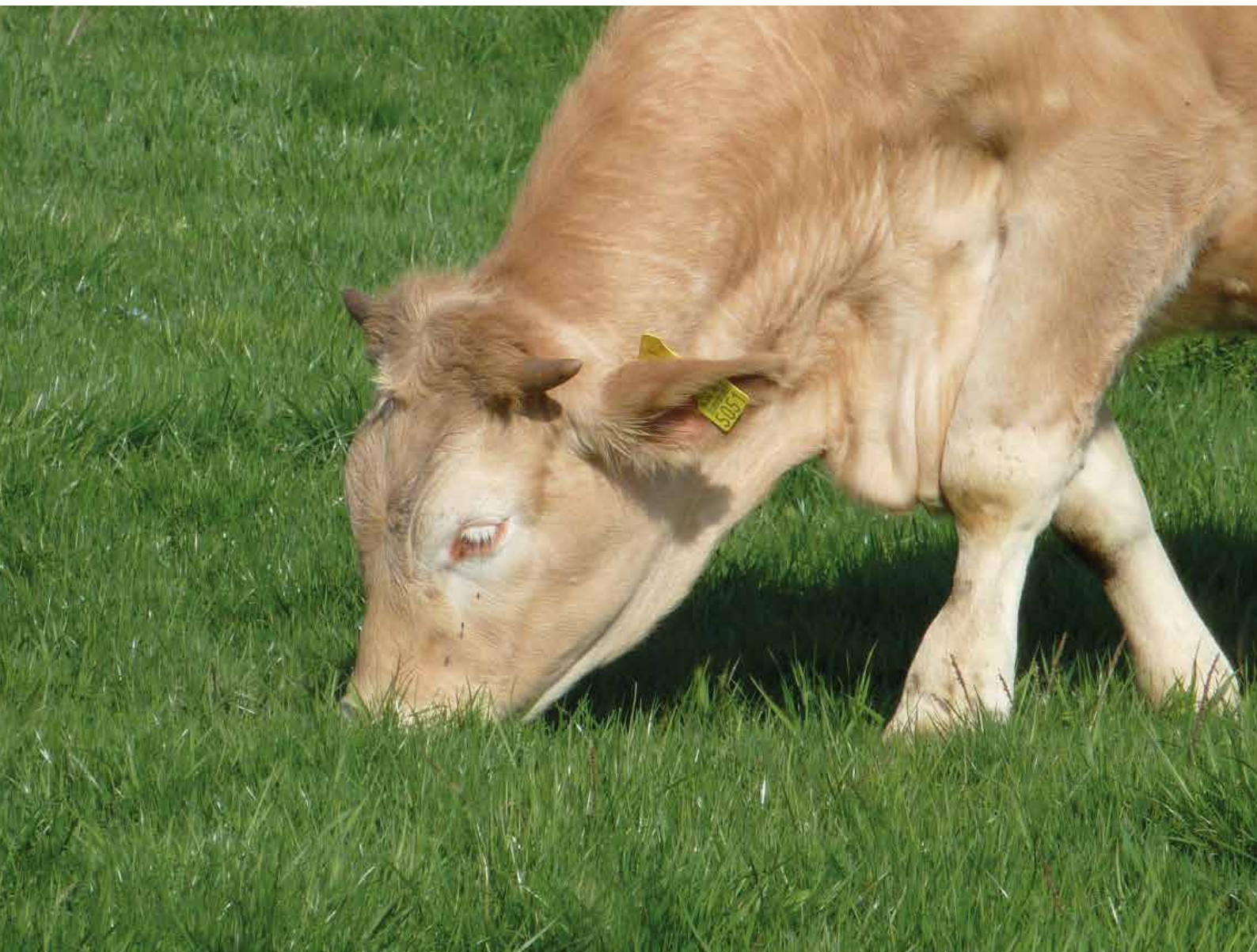


Cerience
L'AGRONOME SEMENCIER

GALIBIER
COCKSFOOT

A MOUNTAIN OF FORAGE!





GALIBIER

Features:

- Cocksfoot

Heading date:

- 08/05

Heading date observed in trials performed in West Central France

Profile:

- Long term

Persistency:

- 4 years and more

Soil types:

- Healthy and deep

- Acid drying

- Calcareous drying

Sowing rate:

- 20-25 kg/ha (8-10 kg/ac) as pure

- or in combination with 2-3 kg/ha (0.8-1.2 kg/ac) white clover

ITS ADVANTAGES

• Very productive from the 1st cut:

- GALIBIER stands out straight on the seeding year through a good establishment vigour (yielding of the 1st cut: 105% compared to the control).
- The following years, GALIBIER strengthens its performances with an exceptional yielding during spring and also on the following regrowth.



• Hyper rustic:

- Thanks to its excellent resistance to all the diseases (integrated in the table), GALIBIER produces a grass that's very well consumed and valued by the cattle.
- Furthermore, GALIBIER stands out through a very good resistance to cold.

• Farming source:

- The early and vigorous start of GALIBIER at the beginning of the spring (31/03) ensure a quality grazing during the spring.
- Its late heading allows GALIBIER to provide more than 50 days of grazing.

FOR WHAT USE ?

Grazing	Mowing
	

Seeding (August-September or March-April):

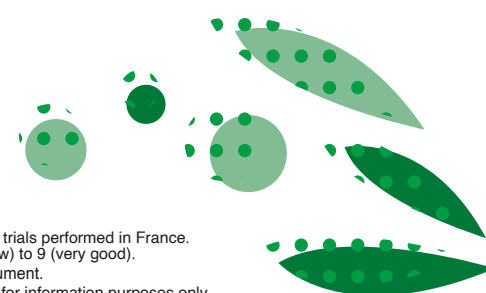
- Prepare a thin surface soil;
- Seed at a depth of 1 up to 2 cm;
- Roll right after seeding.

Protection:

- Monitor slugs during the implantation and take action if needed;
- Remove the weeds during the establishment as early as 3-4 leaves stage if needed (seek advice from your technician).



Packaging:
Bag of 10 kg



Scores refer to registration trials performed in France. They range from 1 (very low) to 9 (very good).
2021 • Non-contractual document.
This document is provided for information purposes only. Recommendations may vary according to local soil and climate conditions and local agricultural practices.